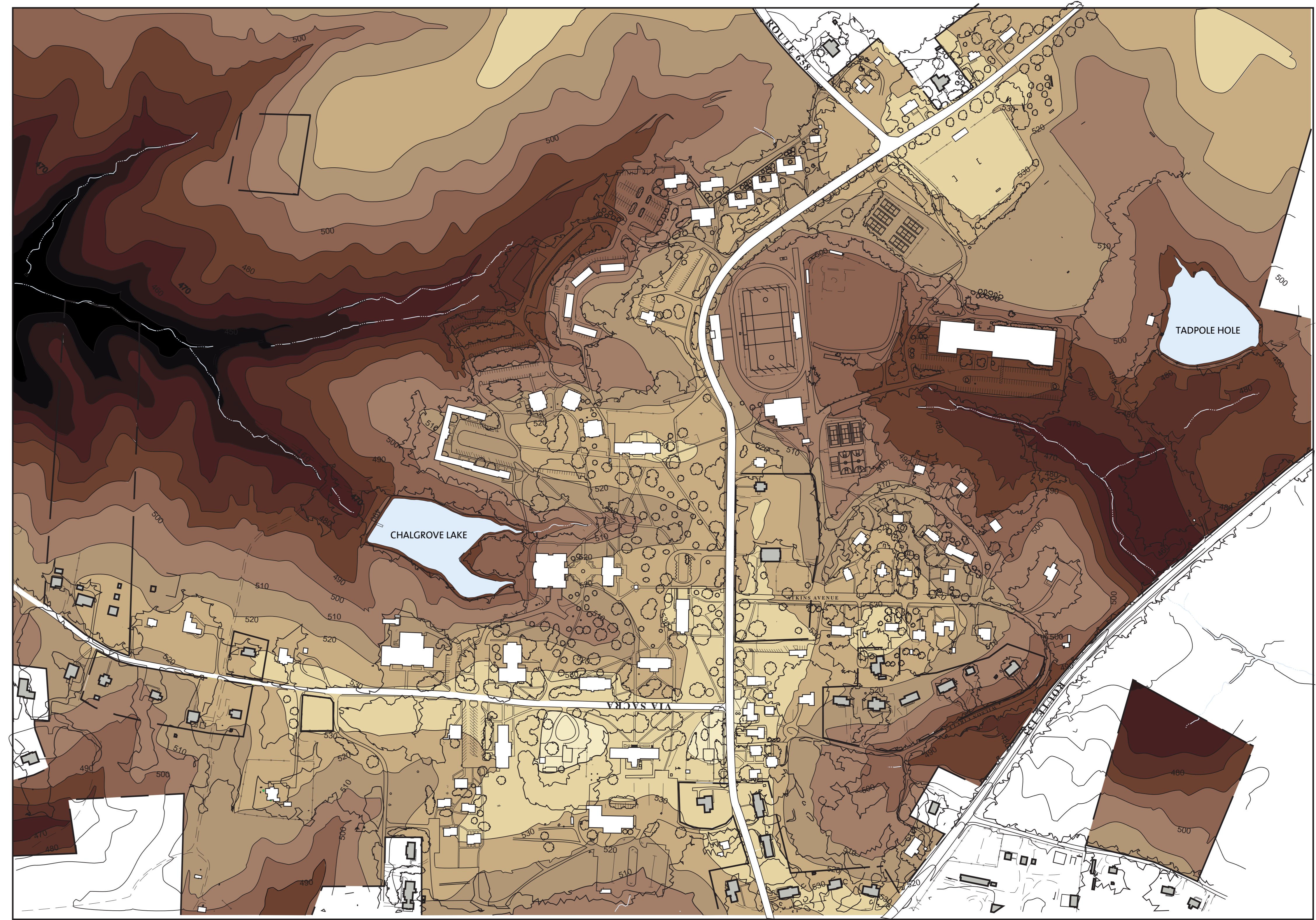


Topography-1999

- 540' and ABOVE
- 530'-540'
- 520'-530'
- 510'-520'
- 500'-510'
- 490'-500'
- 480'-490'
- 470'-480'
- 460'-470'
- 450'-460'
- 440'-450'
- 440' and BELOW
- BUILDINGS NOT OWNED BY COLLEGE



Campus Landscape-1999

- DECIDUOUS TREES
- EVERGREENS TREES
- ATHLETIC FIELDS
- COLLEGE BUILDINGS
- CORE CAMPUS LAWNS
- SPECIAL OPEN SPACE

